

# PIPE FLASHING



Pipe Size	Base Diameter	Color Material	Carton Quantity	Weight Per Carton
1/4" - 2 1/2"	4.75" (120.7mm)	Black/ Gray EPDM & Red/ Gray Silicone	15	2.5
1 3/4" - 3"	6.21" (157.7mm)	Black/ Gray EPDM & Red/ Gray Silicone	15	4.5
1/4" - 5"	7.74" (196.6mm)	Black/ Gray EPDM & Red/ Gray Silicone	15	7.5
3" - 6 1/4"	9.26" (235.2mm)	Black/ Gray EPDM & Red/ Gray Silicone	10	8.0
4 1/4" - 7 3/4"	10.75" (273.0mm)	Black/ Gray EPDM & Red/ Gray Silicone	10	9.5
5" - 9"	12.50" (317.5mm)	Black/ Gray EPDM & Red/ Gray Silicone	10	12.0
6" - 11"	14.60" (370.8mm)	Black/ Gray EPDM & Red/ Gray Silicone	10	15.5
7" - 13"	16.5" (419.1mm)	Black/ Gray EPDM & Red/ Gray Silicone	5	12.8
9" - 19"	25.25" (641.1mm)	Black/ Gray EPDM & Red/ Gray Silicone	5	19.3

## Standard Specifications

- Manufactured from EPDM or silicone rubber, Pipe Flashing is compounded for maximum resistance to ozone, UV light, & temperature extremes.
- Flexible aluminum base will allow the flashing to conform to any metal roof configuration. Pipe location can be centered in the flat of the panel or the rib. Urethane sealant & self-drilling screws complete the installation.
- Well-marked so they can easily be cut with shears to fit exactly the pipe size used.
- Available in Black or Gray EPDM as well as Red or Gray high temperature Silicone.

## Description

Designed with sleeve flexibility to absorb vibration and pipe movement caused by expansion/contraction while sealing out unwanted elements. Easy on-site customization can accommodate virtually all installations.

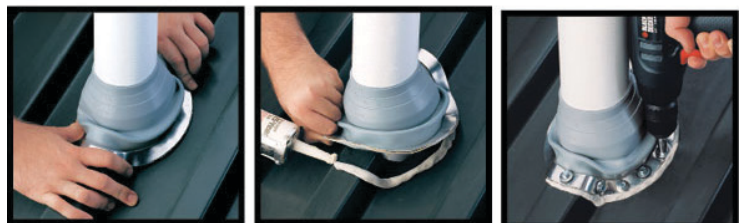
Test	EPDM 500	Silicone
Advanced Ozone Resistance	70 hr @ 500 pphm	70 hr @ 500 pphm
High Temperature Resistance	+135°C (+275°F) +100°C (+212°F)	+260°C (+500°F) +225°C (+500°F)
Low Temperature Resistance	-55°C (-65°F)	-74°C (-100°F)
Tensile Set Maximum Compression Set Maximum	10MPa (1450psi) 25%	5MPa (700psi) 50%

## EASY INSTALLATION



1. Choose pipe opening and trim

2. Slide over pipe



3. Form to roof profile

4. Apply sealant

5. Fasten to complete

LEBANON, PA  
888.339.0059

ORWELL, OH  
877.866.9955

HOWE, IN  
866.562.3782

BRIDGTON, ME  
800.677.2060