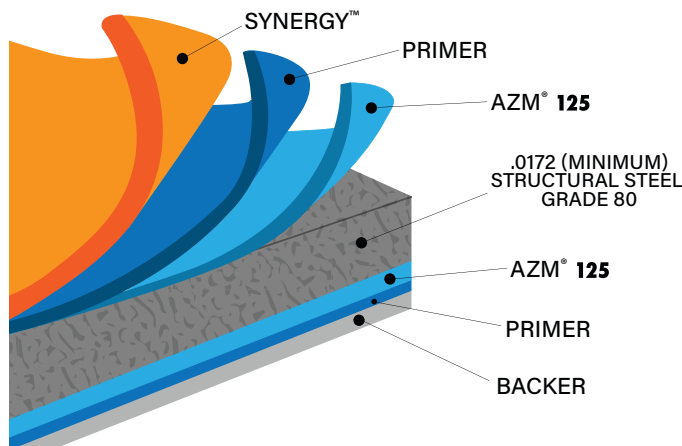


THE NEXT GENERATION

Everlast Roofing is proud to be an innovator in our field. Our promise to our customers is to continue to push boundaries to produce a superior performing product. It is this promise that has led to the introduction of **AZM® with Activate Technology** and our exclusive paint system with the release of our next generation product. Backed with a 20-year proven record of outperforming all others in both accelerated laboratory and real world harsh environment exposure tests, **Everlast Roofing is the only company in North America to offer this technology.**

TRUE 27 GAUGE STEEL

At its core, the OMNI series is built on true 27 gauge steel, that's measured before paint, not after. This thicker steel is the fundamental design difference of the Everlast II® OMNI panel; boasting long-term strength, enabling higher snow and wind yields, and unprecedented hail resistance. Additional benefits include improved job-site durability, and the reduction of oil canning, ghosting and purlin show through.



1. SUPERIOR BARRIER PROTECTION

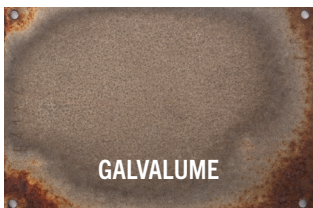
The OMNI series includes the latest in corrosion resistance with the Next Generation AZM® coating with Activate Technology, which provides for the best corrosion resistance in the industry. This first-of-its-kind metallic coating introduces magnesium into the aluminum-zinc alloy coating, which improves galvanic protection by activating the aluminum.



AZM® with Activate Technology sets a new industry benchmark for corrosion control with the addition of magnesium into the aluminum-zinc coating. Magnesium forms a chemical reaction with aluminum and activates sacrificial characteristics not previously present. The result is a product that provides self-sealing protection.

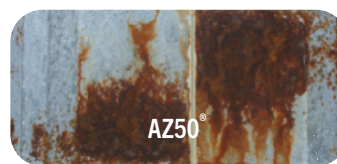
REAL WORLD EXPOSURE TESTING

Images shown below are 4" x 6" samples after 20 years exposure in a severe marine environment.



LABORATORY TESTING

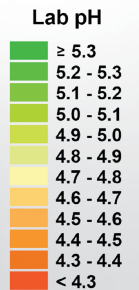
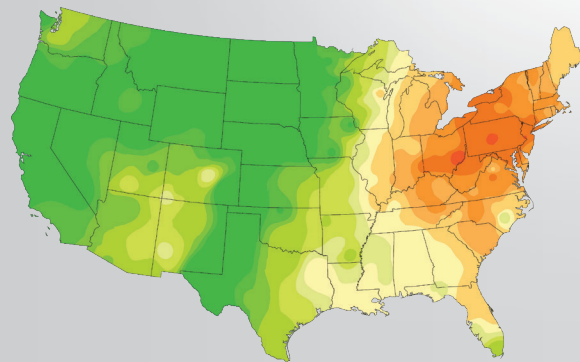
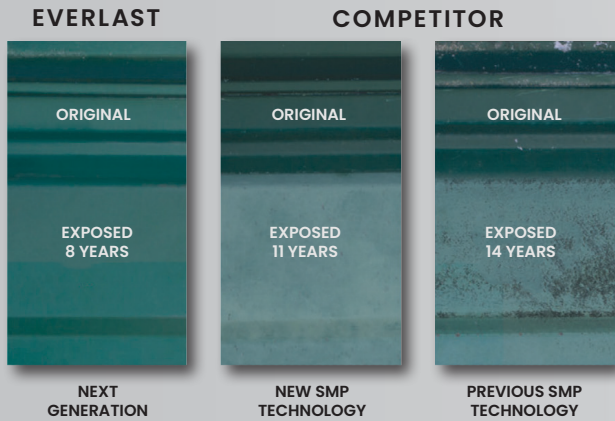
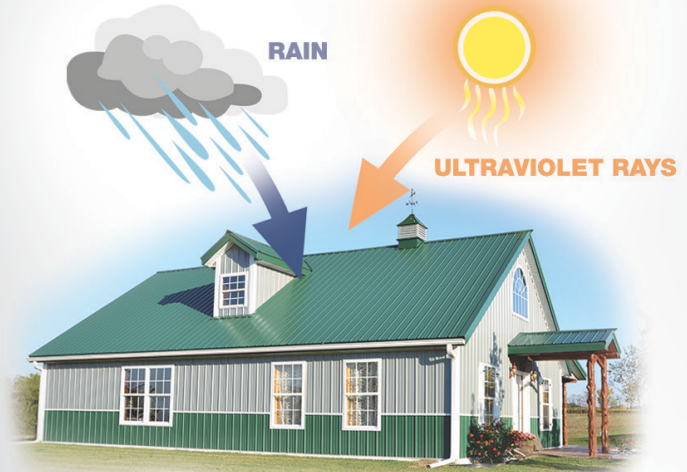
After 14 weeks of Q-Fog testing, next generation AZM® with Activate Technology demonstrates its superior resistance to corrosion in a laboratory simulation of natural atmospheric corrosion.



WHAT SETS US APART?

2. EXCLUSIVE PAINT SYSTEM

Our exclusive paint system has been tested in some of the harshest regions of the world, where corrosive environments and high solar intensity take their toll on painted products. Even with over 50 years of proven excellent durability in locations across the globe, Everlast Roofing continues to test and evaluate our paint system for resistance to corrosion, dirt retention, chalking, color fade and gloss retention.

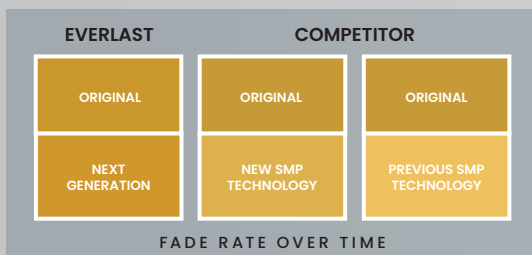


TESTING IN REAL CONDITIONS

The panels shown above are actual samples that were exposed to real-life outdoor conditions on the same building. Our exclusive paint system is trending to surpass the competitor's current and previous SMP Technology.

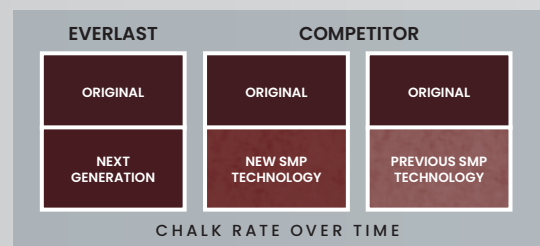
FADE RESISTANCE

A gradual change in the panel's paint color or gloss is known as fading. Fading occurs when there is a breakdown in the pigment caused by direct panel exposure to the sun's UV rays.



CHALK RESISTANCE

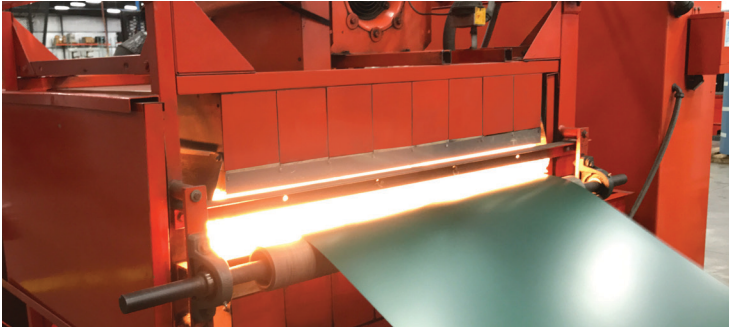
A white powdery residue or appearance on the surface of the panel is evidence of chalking. Chalking is a direct result of a breakdown in the resin that is, most often, the result of environmental weathering.



IT'S SIMPLE AS 1, 2, 3....

3. INNOVATIVE PROCESS

One of the greatest assets of Everlast, and what sets us apart from the rest is the Evercure Process. This process includes the revolutionary CECI® enhancement that not only seals the metal's cut edge, but also protects it from both natural and commercial corrosive elements. Everlast's panels are stronger, more durable and less likely to crack over time. The Evercure Process is state of the art and we are confident it will continue to set the standard for quality metal building components.

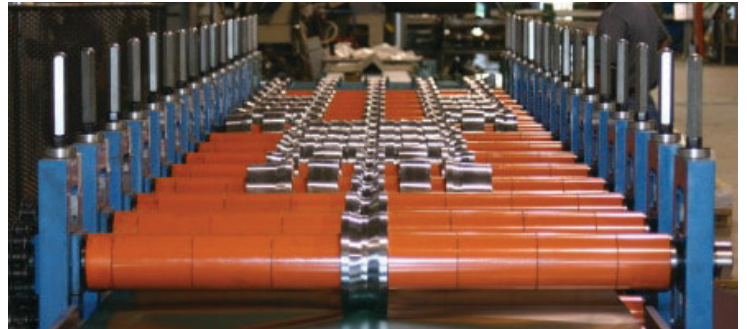


HEAT FORMING

Everlast pioneered the Heat Forming process nearly 20 years ago and the technology remains unmatched. It is a crucial step in making the most corrosion resistant panel possible. Before the finished panel is formed, it is heated with infrared energy causing the steels coatings to become more flexible. This virtually eliminates crazing and microfracturing at the bend lines, which are leading causes of premature rusting.

ADVANCED TOOLING

Advanced State-of-the-Art Tooling is another area of excellence in Everlast Roofing's roll formed products. Using additional stands places less stress on the formed radius of our panel providing the most consistent panel profile on the market.

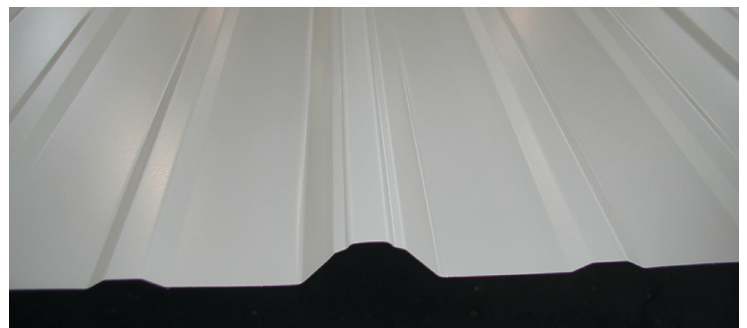


CECI®

To combat edge rust, Everlast introduced Cut-Edge-Corrosion-Inhibitor®, known as CECI®. Applied after the panel is formed, CECI® provides an invisible layer of protection, so end-users will see virtually no sign of CECI® as it quietly protects and effectively decreases corrosion rates, as proven through industry research.

FINISHED PANEL

As proven through industry research, Everlast's panels are stronger, more durable and less likely to crack over a duration of time.



PACKAGING & DELIVERY



All of our exposed fastener panels are packaged with a PVC protective cover sheet and angle boards to protect the panel from scratching and the edges from damaging during the unloading process. Utilizing wood chocks every 5' on the bottom and 1" x 4" boards on the top and then steel banding together, we can ensure high-quality control during shipment and allow easy unloading. In addition, our formed trim is wrapped with angle boards and plastic wrapping to protect from damage and will enable the customer to accurately identify the choice of color.

**We proudly service clientele
in 23 states with a fleet of
company-owned trucks and
drivers.**

**Our distribution services
guarantee on-time delivery and
reliable transportation.**





Everlast Roofing, Inc.

OUR NAME SAYS IT ALL

LEBANON, PA
888.339.0059

ORWELL, OH
877.866.9955

HOWE, IN
866.562.3782

BRIDGTON, ME
800.677.2060

OMNI

TESTED. TRUSTED. TOUGHER THAN EVER.



888.339.0059

EVERLASTROOFING.COM